

49/73

49/73

A PART OF A P.U.D. WOODSTREAM

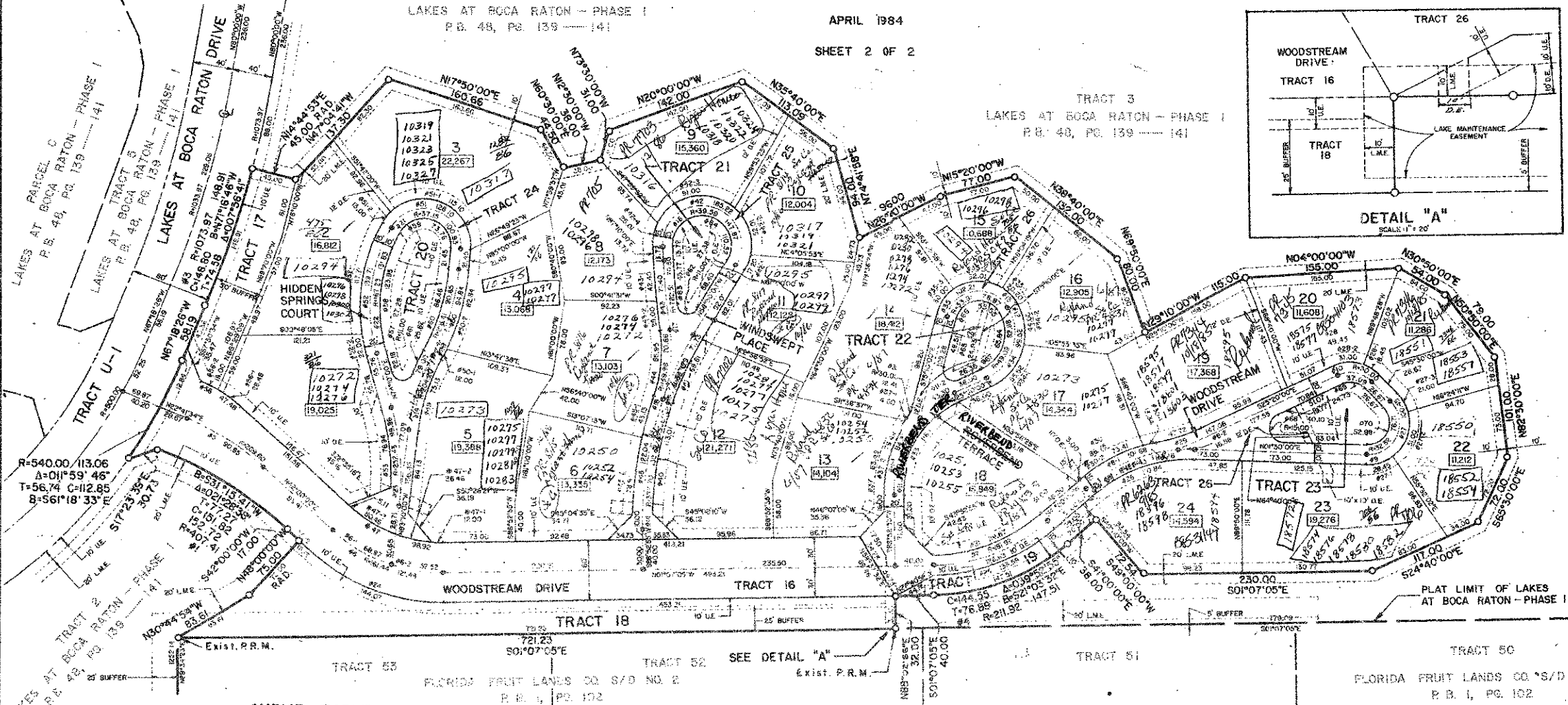
A PLAT OF A PORTION OF SECTION I, TOWNSHIP 47 SOUTH, RANGE 41 EAST
AND ALSO BEING A REPLAT OF PARCEL O OF LAKES AT BOCA RATON—PHASE I AS RECORDED IN
PLAT BOOK 48, PAGES 139 — 141 OF THE PUBLIC RECORDS OF PALM BEACH COUNTY, FLORIDA
PALM BEACH COUNTY, FLORIDA

JOHN A. GRANT, JR., INC. CONSULTING ENGINEERS AND LAND SURVEYORS

BOCA RATON, FLORIDA

APRIL 1984

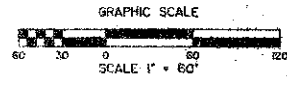
SHEET 2 OF 2



PLAT LIMIT OF LAKES AT BOCA RATON - PHASE I

TRACT 3
LAKES AT BOCA RATON - PHASE I
P.B. 48, P. 139 - 141

TRACT 50
FLORIDA FRUIT LANDS CO. S/D NO. 2
P.B. 1, PG. 102



BOCA CHASE SECTION FOUR
P.B. 45, P. 197 & 198

CURVE TABLE										CURVE TABLE										CURVE TABLE									
NUMBER	RADIUS	ARC	DELTA	TANGENT	CHORD	CHORD-BEARING	NUMBER	RADIUS	ARC	DELTA	TANGENT	CHORD	CHORD-BEARING	NUMBER	RADIUS	ARC	DELTA	TANGENT	CHORD	CHORD-BEARING									
1	407.41	152.72	021°28'38"	77.27	351.82	S31°25'54"W	28	40.00	19.45	07°50'00"	78.45	36.35	S10°05'00"E	47	131.44	98.92	043°07'05"	51.95	96.60	S20°26'26"W									
2	540.00	113.06	011°28'45"	56.74	118.85	S61°18'33"W	29	40.00	19.45	07°50'00"	78.45	36.35	S10°05'00"E	48	131.44	98.92	043°07'05"	51.95	96.60	S20°26'26"W									
3	1075.97	48.91	007°56'41"	74.58	49.80	N7°16'48"W	30	40.00	19.45	07°50'00"	78.45	36.35	S10°05'00"E	49	131.44	98.92	043°07'05"	51.95	96.60	S20°26'26"W									
4	211.92	47.51	038°52'55"	76.99	144.55	S21°03'32"E	31	200.00	47.72	013°40'14"	25.37	47.87	S18°29'53"E	50	131.44	98.92	043°07'05"	51.95	96.60	S20°26'26"W									
5	269.60	90.85	013°18'26"	45.86	90.42	N32°20'47"E	32	169.43	36.75	029°20'14"	44.35	85.87	S28°19'53"E	51	131.44	98.92	043°07'05"	51.95	96.60	S20°26'26"W									
6	161.44	21.49	043°07'05"	63.79	118.85	N20°26'28"E	33	100.62	116.11	086°07'05"	60.49	109.78	N58°03'22"W	52	131.44	98.92	043°07'05"	51.95	96.60	S20°26'26"W									
6-1		66.97	024°28'37"	35.02	68.44	N24°45'42"E	34	100.62	116.11	086°07'05"	60.49	109.78	N58°03'22"W	53	131.44	98.92	043°07'05"	51.95	96.60	S20°26'26"W									
6-2		52.52	014°38'28"	26.50	52.29	N08°12'09"E	35	171.92	119.97	039°52'55"	66.37	117.27	S21°03'22"E	54	131.44	98.92	043°07'05"	51.95	96.60	S20°26'26"W									
7	181.92	126.23	039°52'55"	66.00	124.09	N21°03'32"W	36	100.62	116.11	086°07'05"	60.49	109.78	N58°03'22"W	55	131.44	98.92	043°07'05"	51.95	96.60	S20°26'26"W									
8	159.43	119.26	042°00'00"	62.00	115.57	N19°45'00"W	37	100.62	116.11	086°07'05"	60.49	109.78	N58°03'22"W	56	131.44	98.92	043°07'05"	51.95	96.60	S20°26'26"W									
8-1		101.88	036°52'33"	52.84	92.97	N22°43'43"W	38	59.09	99.52	098°30'00"	65.20	88.17	N73°15'00"W	57	131.44	98.92	043°07'05"	51.95	96.60	S20°26'26"W									
8-2		16.58	008°57'27"	8.30	16.97	N01°28'43"W	39	59.09	99.52	098°30'00"	65.20	88.17	N73°15'00"W	58	131.44	98.92	043°07'05"	51.95	96.60	S20°26'26"W									
9	32.32	76.71	136°00'00"	79.99	99.93	N68°30'00"W	40	30.00	44.00	053°50'08"	30.00	55.52	N5°55'04"W	59	131.44	98.92	043°07'05"	51.95	96.60	S20°26'26"W									
10	50.00	37.95	070°50'00"	21.33	34.77	S19°05'00"W	41	120.92	102.21	133°40'00"	132.39	80.55	S08°20'00"E	60	131.44	98.92	043°07'05"	51.95	96.60	S20°26'26"W									
11	110.62	127.65	066°00'00"	72.00	120.69	N58°03'32"W	42	43.81	20.20	026°24'47"	10.28	20.02	S45°17'27"W	61	131.44	98.92	043°07'05"	51.95	96.60	S20°26'26"W									
11-1		84.35	043°01'15"	44.34	44.34	N68°16'27"W	43	30.00	44.00	053°50'08"	30.00	55.52	N5°55'04"W	62	131.44	98.92	043°07'05"	51.95	96.60	S20°26'26"W									
11-2		43.30	022°25'50"	21.93	43.03	N73°15'00"W	44	30.00	44.00	053°50'08"	30.00	55.52	N5°55'04"W	63	131.44	98.92	043°07'05"	51.95	96.60	S20°26'26"W									
12	49.09	82.68	098°30'00"	55.00	76.01	N73°15'00"W	45	30.00	44.00	053°50'08"	30.00	55.52	N5°55'04"W	64	131.44	98.92	043°07'05"	51.95	96.60	S20°26'26"W									
13	33.81	76.87	133°40'00"	79.01	62.17	S08°20'00"E	46	120.92	102.21	133°40'00"	132.39	80.55	S08°20'00"E	65	131.44	98.92	043°07'05"	51.95	96.60	S20°26'26"W									
14	377.70	132.62	020°07'05"	67.00	31.94	N8°03'33"W	47	120.92	102.21	133°40'00"	132.39	80.55	S08°20'00"E	66	131.44	98.92	043°07'05"	51.95	96.60	S20°26'26"W									
15	337.79	71.73	014°10'00"	36.00	71.39	N64°53'00"W	48	49.56	79.49	037°45'30"	41.25	78.06	S72°14'20"E	67	131.44	98.92	043°07'05"	51.95	96.60	S20°26'26"W									
16	39.58	147.87	014°10'00"	36.00	75.72	S14°10'00"W	49	49.56	79.49	037°45'30"	41.25	78.06	S72°14'20"E	68	131.44	98.92	043°07'05"	51.95	96.60	S20°26'26"W									
17	782.51	70.50	005°08'43"	35.27	70.47	N84°35'06"E	50	367.70	113.91	017°36'34"	56.95	112.57	N79°48'17"W	69	131.44	98.92	043°07'05"	51.95	96.60	S20°26'26"W									
18	149.98	70.66	026°55'43"	36.00	76.01	S84°29'51"E	51	327.79	69.61	012°10'00"	34.93	59.47	N64°55'06"W	70	131.44	98.92	043°07'05"	51.95	96.60	S20°26'26"W									
19	204.20	79.00	022°10'00"	40.00	76.51	N72°05'00"W	52	49.56	79.49	037°45'30"	41.25	78.06	S72°14'20"E	71	131.44	98.92	043°07'05"	51.95	96.60	S20°26'26"W									
20	216.41	90.05	024°00'00"	46.00	99.99	N75°00'00"W	53	367.70	113.91	017°36'34"	56.95	112.57	N79°48'17"W	72	131.44	98.92	043°07'05"	51.95	96.60	S20°26'26"W									
21	37.15	00.93	155°40'00"	172.31	72.63	S17°10'00"W	54	49.56	79.49	037°45'30"	41.25	78.06	S72°14'20"E	73	131.44	98.92	043°07'05"	51.95	96.60	S20°26'26"W									
22	167.23	151.83	045°10'00"	69.55	128.44	S83°15'00"E	55	367.70	113.91	017°36'34"	56.95	112.57	N79°48'17"W	74	131.44	98.92	043°07'05"	51.95	96.60	S20°26'26"W									
23	252.43	99.86	022°40'00"	50.59	99.21	N95°30'00"E	56	49.56	79.49	037°45'30"	41.25	78.06	S72°14'20"E	75	131.44	98.92	043°07'05"	51.95	96.60	S20°26'26"W									
24	191.44	144.07	043°07'05"	75.64	140.69	N20°26'28"E	57	49.56	79.49	037°45'30"	41.25	78.06	S72°14'20"E	76	131.44	98.92	043°07'05"	51.95	96.60	S20°26'26"W									
25	191.92	135.59	039°52'55"	69.63	130.91	N21°03'32"W	58	367.70	113.91	017°36'34"	56.95	112.57	N79°48'17"W	77	131.44	98.92	043°07'05"	51.95	96.60	S20°26'26"W									
26	149.43	110.84	042°30'00"	98.11	108.32	N19°45'00"W	59	49.56	79.49	037°45'30"	41.25	78.06	S72°14'20"E	78	131.44	98.92	043°07'05"	51.95	96.60	S20°26'26"W									
27	42.32	100.45	136°00'00"	104.75	78.48	N66°30'00"W	60	367.70	113.91	017°36'34"	56.95	112.57	N79°48'17"W	79	131.44	98.92	043°07'05"	51.95	96.60	S20°26'26"W									
27-1		28.45	038°31'34"	14.79	27.92	N17°45'47"W	61	49.56	79.49	037°45'30"	41.25	78.06	S72°14'20"E	80	131.44	98.92	043°07'05"	51.95	96.60	S20°26'26"W									
27-2		51.00	069°02'39"	29.11	47.97	N71°32'53"W	62	49.56	79.49	037°45'30"	41.25	78.06	S72°14'20"E	81	131.44	98.92	043°07'05"	51.95	96.60	S20°26'26"W									
27-3		21.00	028°25'47"	10.72	20.78	S59°42'54"W	63	49.56	79.49	037°45'30"	41.25	78.06	S72°14'20"E	82	131.44	98.92	043°07'05"	51.95	96.60	S20°26'26"W									
							64	49.56	79.49	037°45'30"	41.25	78.06	S72°14'20"E	83	131.44	98.92	043°07'05"	51.95	96.60	S20°26'26"W									

NOTES:

- Bearings shown hereon are based on a bearing of S00°00'00"E along the Range line (West line Sec. 6, T. 47 S., R. 42 E.) as obtained from the Section breakdown map—Sec. 1, T. 47 S., R. 41 E. from Palm Beach County.
- No buildings or any kind of construction shall be placed on utility or drainage easements.
- No structures, trees or shrubs shall be placed on drainage easements.
- Approval of landscaping on utility easements, other than water and sewer, shall be only with the approval of all utilities occupying same.
- PRM indicates Permanent Reference Monument.
- P.C.P. indicates Permanent Control Point.
- U.E. indicates Utility Easement.
- D.E. indicates Drainage Easement.
- L.M.E. indicates Lake Maintenance Easement.

0388-305

This instrument was prepared by:
John A. Grant, Jr., John A. Grant, Jr., Inc.
3333 North Federal Highway, Boca Raton, Florida 33431.